


# English language courses in the heart of London 2011



UNIVERSITY of CAMBRIDGE  
ESOL Examinations

Authorised Centre



**“ All the teachers are professional and the atmosphere is very friendly. The classes are interesting and varied so I've studied exam skills, general English and Business English - I never get bored. I chose the school due to its experience and location and I am very happy. ”**

**Anna Mattos,  
Brazil**

Anna enrolled on an Academic Year course at Central School of English for 24 weeks. Her learning goals included communicating successfully in a business and social context. Anna is improving rapidly through actively participating in her classes and joining our daily social programme events. Our flexible courses have enabled her to achieve her goals which will ultimately enhance her future career.

## Welcome to London

*Our students all agree on one thing: the international atmosphere and the excellent teachers at Central School of English create the ideal learning experience.*

Since opening our doors in 1968, Central School of English has been committed to providing the highest quality of English language teaching. Our students are from over 50 different countries, aged from 16 to 70 years old and are at various stages of learning English. They are united by their common desire to operate in an international environment.

Committed to your success, we promote a combination of classroom based lessons, homework tasks and self-study, complemented by our highly acclaimed cultural and social activities programmes. With Central School of English you can learn English, make friends and experience life in London.

### What will you achieve?

Students who join a course at CSE will:

- ➔ improve their English level through continuous practice
- ➔ speak English with the correct pronunciation and sentence structure
- ➔ be able to write in English clearly and succinctly
- ➔ become more confident in their personal and professional lives
- ➔ learn about other cultures through socialising with native speakers and international students
- ➔ be taught by experienced teachers who are professional, friendly and guarantee students will improve their English
- ➔ become more successful at university and professionally



# Why choose Central Sch

Over 40 years' experience  
1968-2011

## Excellent facilities

- ➔ 12 comfortable, spacious rooms
- ➔ Air-conditioning in all group rooms
- ➔ Study centre providing computers with internet access and learning tools including books, DVDs and CDs.
- ➔ Free high speed wireless access
- ➔ Coffee bar serving snacks and drinks

## Our staff

- ➔ Friendly, helpful enrolments team to help with every aspect of your stay including accommodation and welfare
- ➔ Well-qualified, enthusiastic, professional teachers who are dedicated to providing a serious, stimulating learning experience

## Summer Centre

- ➔ Large, modern Summer Centre used during July and August
- ➔ 15 minute walk to Central School of English
- ➔ Great facilities including bright classrooms, an auditorium, a student common room and a large computer room with free internet access

## Superb location

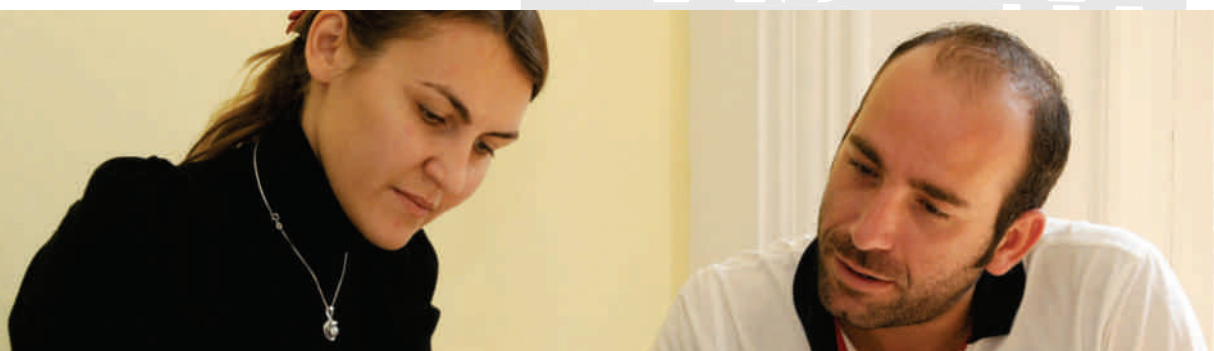
- ➔ Centrally located next to Tottenham Court Road underground station, within minutes of the West End, Covent Garden and Leicester Square

## Excellent variety of accommodation

- ➔ We offer a wide range of accommodation options (see page 10)
- ➔ Friendly and welcoming homestay families
- ➔ Residences available all year
- ➔ Hotels, studios and self-catering apartments

## Social Programme

- ➔ Variety of cultural and social events to experience all London has to offer
- ➔ Minimum one event every day throughout the year
- ➔ At least 3 weekday events are free of charge
- ➔ All weekday activities are teacher-led providing you with the opportunity to socialise with native speakers (see page 11 for more information)
- ➔ Day excursions to popular towns & cities in the UK
- ➔ Weekend trips to European cities



# School of English?

## Great choice of courses

- ➔ Wide range of courses (see pages 6-9)
- General English
- English for Business
- IELTS and Cambridge Exam Preparation
- Academic Year Programmes
- One-to-one lessons

## Small class size

- ➔ Maximum 12 students in all classes
- ➔ The average class size is 10

## Our teaching style

- ➔ Clear objectives identified at the beginning of each lesson
- ➔ Well-structured lessons designed to challenge you
- ➔ Dynamic, intensive tuition with maximum teacher-student contact time
- ➔ Emphasis on practice and active use of the language
- ➔ Private study exercises which consolidate classroom activities

## Flexible course timetables

- ➔ Choose 25, 17.5 or 12.5 hours per week
- ➔ Lessons are of 1 hour (60 mins) or 1.5 hours (90 mins) duration
- ➔ Minimum course length 1 week, no maximum course length
- ➔ Courses begin every Monday
- ➔ Option to study in the morning, afternoon or have a full day study programme
- ➔ Possibility to combine General English with exam preparation, English for Business or one-to-one lessons

| Course options                               |                    | 9:00-11:45 | 12:00-13:00 | 13:15-16:00 |
|--|--------------------|------------|-------------|-------------|
| <b>Intensive</b><br>25 Hours per week        | Full-day programme |            |             |             |
| <b>Standard</b><br>17.5 Hours per week       | Morning option     |            |             |             |
|  | Afternoon option   |            |             |             |
| <b>Semi Intensive</b><br>12.5 Hours per week | Morning option     |            |             |             |
|  | Afternoon option   |            |             |             |



# Courses General English

Our General English courses are ideal for those who wish to improve their overall knowledge of the English language. We welcome students of all levels of English from beginner to advanced. Our expert teachers combine course book tasks with authentic materials to develop students ability to communicate.

Minimum age 16 years old.

## General English Intensive

09:00 - 16:00 (25 hours)

## General English Standard

09:00 - 13:00 *or* 12:00 - 16:00 (17.5 hours)

## General English Semi-Intensive

09:00 - 11:45 *or* 13:15 - 16:00 (12.5 hours)

*“All the teachers were engaging and interesting. I learnt how to communicate easily in English and I improved greatly in a short time...”*

**Paco, Spain**

## What will you achieve?

Students on a General English programme will:

- ➔ develop fluency and listening skills to communicate with both native speakers and international colleagues
- ➔ practise formal and informal language
- ➔ learn grammar rules in order to produce accurate sentences when speaking and writing in English
- ➔ develop confidence in English and therefore in their personal and professional lives
- ➔ improve understanding of English in everyday situations: ordering food in a restaurant, shopping at the supermarket, reading English newspapers, watching films

Please see page 5 for the course timetable options:

| Accuracy in English<br>09.00-11.45  | Key English Skills<br>12.00-13.00  | Fluency Practice<br>13.15-16.00  |
|---|--|--|
| <ul style="list-style-type: none"> <li>➔ sentence structures</li> <li>➔ use of tenses</li> <li>➔ vocabulary development</li> <li>➔ grammar practice tasks</li> <li>➔ production of accurate language</li> <li>➔ comprehension skills</li> </ul> | <ul style="list-style-type: none"> <li>➔ listening</li> <li>➔ reading</li> <li>➔ writing</li> <li>➔ speaking</li> <li>➔ exam skills</li> </ul> | <ul style="list-style-type: none"> <li>➔ fluency development</li> <li>➔ listening skills</li> <li>➔ pronunciation</li> <li>➔ sentence and word stress</li> <li>➔ confidence building</li> <li>➔ interaction with international colleagues</li> </ul> |



# Courses English for Business

The English for Business course is designed for university students studying business-related topics and those who already have an international career. Students must have a minimum intermediate level to join this course. The course content is tailor-made each week to take into account the needs of the students in the class. It is fast-paced and varied, making use of authentic materials and course books for maximum results.

Minimum age 18 years old.

## What will you achieve?

Students on an English for Business programme will:

- develop a strong understanding of formal language used in the work place
- practise presentations and role-play to promote confidence when speaking English in front of an audience
- be confident in writing official documentation i.e. reports, CV, e-mails
- learn new vocabulary within a business context
- increase the opportunities available to them in the business world

## Business English Intensive

09:00 - 16:00 (12.5 hours General English and 12.5 hours Business English)

## Business English Standard

12:00 - 16:00 (5 hours General English and 12.5 hours Business English)

## Business English Semi-Intensive

13:15 - 16:00 (12.5 hours)

*“The Business English class helped me develop the confidence to communicate on equal terms in formal situations which has been a great help in my career...”* Marco, Italy

The Business course takes place in the afternoon from 13.15-16.00. Students preferring a more intensive programme combine this with General English or Exam Preparation lessons.

|            | 13:15 - 14:45  | 15:00 - 16:00  |
|------------|--|--|
| <b>Mon</b> | Needs Analysis Session<br>Leadership - reading an article from a business newspaper and discussion | Negotiating skills and oral practice - strategy, style and tactics needed to negotiate deals     |
| <b>Tue</b> | International Financial Markets - focusing on banking related vocabulary                           | Telephone skills - telephone manners & problem solving on the phone                              |
| <b>Wed</b> | Facts and Figures - focus on graphs and charts to interpret trends within the market               | Meetings skills and practice - strategy, style and tactics needed to run a meeting successfully  |
| <b>Thu</b> | Brand Management: vocabulary & listening   | Presentations - focusing on the language and body language of presentations                      |
| <b>Fri</b> | Designing international formatted CV and cover letters   | Simulated interviews: focusing on the language and questions required for a successful interview |



# Courses Exam preparation

Experts in successfully preparing students for English language exams, our academic team concentrate on training students for the IELTS, First Certificate and Cambridge Advanced exams. Minimum age 16 years old. Courses start every Monday.

## IELTS

An internationally recognised level test mainly used by employers and universities within the UK and Australia. Tests are available 2 times a month throughout the year.

### IELTS Standard

09:00 - 13:00 (17.5 hours)

### IELTS Intensive

09.00 - 16.00 (25 hours) 12.5 hours of IELTS preparation combined with 12.5 hours of General English or English for business

## Cambridge First Certificate & Cambridge Advanced

Internationally recognised exams used by many countries as a measure of English proficiency. A minimum intermediate level required for the First Certificate course and upper intermediate for the Cambridge Advanced course.

4 exam dates each year, see our Dates and Fees 2011 sheet for details.

### Cambridge Intensive

09:00 - 16:00 (25 hours) 12.5 hours of exam preparation and 12.5 hours of General English

### Cambridge Semi-Intensive

09:00 - 11.45 (12.5 hours)

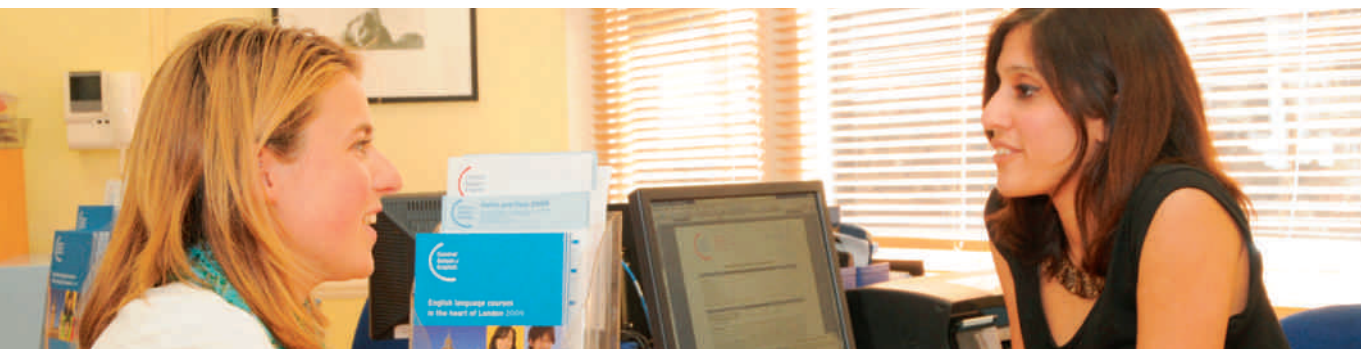
*“The IELTS preparation taught me important techniques to take into the exam like skimming text and highlighting important words...”* Tatsuo, Japan

### What will you achieve?

Students on our Exam preparation courses will:

- ➔ successfully complete mock papers including oral tests with members of the academic team
- ➔ develop skimming and scanning techniques to read large texts quickly in exam conditions
- ➔ prepare written tasks to a high level with sophisticated phrases and grammar structures
- ➔ have listening practise to understand key information in listening extracts and to encourage natural pronunciation
- ➔ have the support of specialist teachers
- ➔ improve accuracy through reviewing grammar structures and use of English

**BULATS:** Central School of English is a BULATS testing centre. This short exam can be taken weekly in school for a recognised certification of your English level.



# Courses One-to-one lessons

Central School of English offer specialist, individual tuition to complement your group lessons. Areas of expertise include:

- ➔ English for business
- ➔ Academic English
- ➔ Exam preparation
- ➔ Financial English
- ➔ Legal English
- ➔ Tourism
- ➔ Architecture
- ➔ Media

Popular combination options are:

**General English Intensive + 5**  
one-to-one lessons  
Focus: grammar and speaking

**Business English Standard + 10**  
one-to-one lessons  
Focus: financial English

**IELTS Standard + 7.5** one-to-one lessons  
Focus: writing section of exam

## What will you achieve?

Students combining group and one-to-one lessons will:

- ➔ improve rapidly through individual attention from the teacher
- ➔ benefit from personalised classes designed for their learning needs

# Courses Academic Year

This course is designed for students wishing to take an extended period of study. Participants combine General English, English for Business and Exam Preparation (see pages 6-8) for a varied and interesting programme. Suitable for all levels of English from elementary to advanced, students can choose to study for 12.5, 17.5 or 25 hours per week.\*

**Benefits of the course:**

- ➔ IELTS preparation course included
- ➔ Monthly meetings with the Academic Manager
- ➔ Appointments with professional counsellors for those requiring advice on university study in the UK

\* Restrictions apply for those requiring a student visa to study in the UK, contact us for further details

## What will you achieve?

Students on an Academic Year Programme course will:

- ➔ gain a thorough understanding of the English language
- ➔ have maximum exposure to English leading to natural use of the language
- ➔ achieve their long term goals, for example, joining a UK university



# Choose your accommodation

## Homestay

Whether you are 16 or 65, staying in an English home is an excellent way to practise your English. Unless you request otherwise you will be the only student speaking your language in the house.

### Standard - Zone 2 or Zone 3/4

Single or Twin / Half Board, B&B or 5-dinner plan

**Superior - Zone 3/4** Single or Twin / Half Board, B&B or 5-dinner plan

Ideal for students who want to rapidly improve their English

---

## Student houses

For those who want more independence this offers an alternative to homestay accommodation. Staying in a house or flat with other students, you will have your own room and share the other facilities.

**Zones 2 or 3** Single or Twin / Self Catering

Great for meeting other students

---

## All year residences

If you prefer a more central location and to stay in a student environment, we can offer budget accommodation in a residence in Zone 1. Ensuite options are also available.

**Zone 1** Single or Twin / Half Board or Self Catering

Perfect for socialising with other international students

---

## Summer residences

From June - September we have a selection of student residences all located within 20 minutes walk or bus ride to the school. Several of our residences also have the option of ensuite facilities.

**Zone 1** Single or Twin / Half Board, B&B or Self Catering

Many ensuite options available in central London

---

## Self-catering studios and shared apartments

Studio apartments and shared apartments offer quality accommodation in the centre of London. Limited availability.

**Zone 1** Single or Twin / Self Catering

For students wanting independence in central London

---

## Hotels

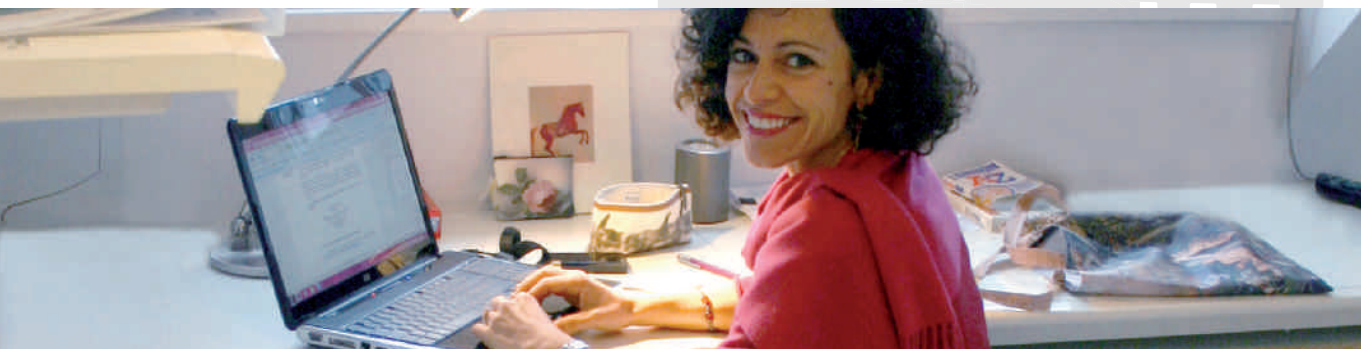
There is a wide range of hotels in central London to suit all tastes and budgets. Information upon request.

For students wanting a little luxury during their stay

---

Please note that some accommodation options are booked by an agency on behalf of Central School of English. For further details of the accommodation we offer see

[www.centralschool.co.uk](http://www.centralschool.co.uk)



# Outside the classroom

***“I enjoyed the social activities, I got to practise my English in a relaxed environment and make new friends...” Pierre, France***

Central School is ideally located in the centre of London, enabling you to explore and experience all it has to offer.

Our Social Programme is designed to give you a wide variety of activities to enjoy after your lessons which benefit you by allowing you to:

- ➔ extend your learning experience outside the classroom
- ➔ practise your English in natural social situations
- ➔ socialise and meet your fellow school mates
- ➔ explore different areas of London with a native English speaker

Throughout the year there is at least one teacher-led activity Monday to Friday, and at least three per week are free of charge.

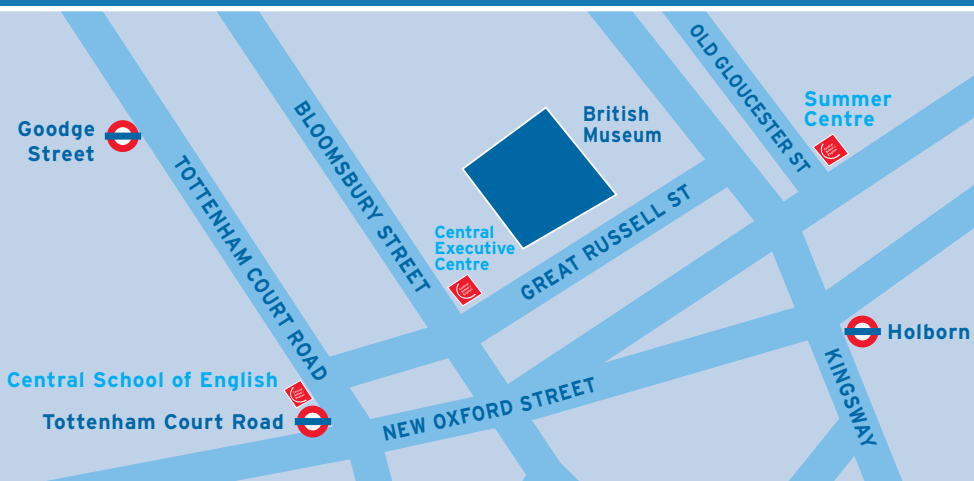
There is also the opportunity to visit popular destinations outside London at the weekend at competitive rates.

A typical week of our Social Programme is given below:

| Monday   | Tuesday  | Wednesday  | Thursday  | Friday   | Saturday  | Sunday   |
|--|--|--|---|--|---|--|
| <b>Welcome meeting</b><br>for all new students<br><br>16.15<br><b>Free</b>           | <b>Play football in Regents Park</b><br><br>16.15<br><b>Free</b> | <b>Theatre trip</b><br><br>19.30<br><b>Approx. £25</b>                           | <b>Meal</b> in local restaurant<br><br>17.30<br><b>Approx. £15</b>      | <b>Hyde Park visit</b> with Serpentine Gallery<br><br>16.15<br><b>Free</b> | <b>Stonehenge &amp; Bath</b><br><br>08.00<br><b>£50</b>     | <b>Oxford &amp; Stratford</b><br><br>08.00<br><b>£50</b> |
| <b>Walk</b> A tour of local London for all new students.<br><br>16.15<br><b>Free</b> | <b>British Museum</b><br><br>16.15<br><b>Free</b>                | <b>Camden Market</b> Visit this famous London market<br><br>17:00<br><b>Free</b> | <b>Riverboat Disco</b> on the Thames<br><br>19.00<br><b>Approx. £15</b> | <b>Pub night</b><br><br>18:00<br><b>Free + cost of drink</b>               | <b>Windsor and Hampton Court</b><br><br>08.00<br><b>£45</b> | <b>Cambridge</b><br><br>08.00<br><b>£45</b>              |

For details of the current social programme see [www.centuralschool.co.uk](http://www.centuralschool.co.uk) or join us on [facebook](#).





**Central School of English**

1 Tottenham Court Road, London W1T 1BB

Tel: +44 20 7580 2863 Fax: +44 20 7255 1806

[www.centralschool.co.uk](http://www.centralschool.co.uk)

**Registered Office:** 38 Binsey Lane, Oxford OX2 OEY